



# MTP8000Ex SERIES ACCESSORIES

WORK **SAFER**  
WORK **SMARTER**  
WORK **ANYWHERE**







Experience the power and performance of the MTP8000Ex Series Radios with ATEX certified accessories, designed to withstand the toughest environments.

The MTP8000Ex Series ATEX radios give workers the ability to work safer, work smarter and work anywhere with powerful audio, enhanced coverage, extended battery life, greater ruggedness, advanced ergonomics and increased usability. That's why it's critical to choose the accessories designed, tested and certified to work optimally with the MTP8000Ex Series ATEX radios.

Communicate in the most demanding PetroChem and Industrial environments with our comprehensive portfolio of accessories, featuring the ATEX Certified Active Noise Cancelling (ANC) Remote Speaker Microphone (RSM) and a portfolio of Heavy Duty Headsets.





# MTP8000Ex SERIES ACCESSORIES

WORK SAFER WORK SMARTER WORK ANYWHERE



MTP8550Ex

MTP8500Ex



**OUR ACCESSORIES ARE ATEX AND  
IECEX CERTIFIED WITH THE LATEST  
AGENCY STANDARDS, IMPROVING  
WORKER SAFETY, COMMUNICATIONS  
AND EFFICIENCY.**

**MTP8000Ex SERIES ACCESSORIES**  
WORK SAFER, WORK SMARTER, WORK ANYWHERE

## REMOTE SPEAKER MICROPHONES

You need the best possible audio quality so your communication remains loud and clear. With these remote speaker microphones you can stay safe in the toughest environments.

**MOTOROLA**



## REMOTE SPEAKER MICROPHONES

### IMPRES™ ACCESSORIES ARE AUTOMATIC

Plug in our IMPRES RSMs and your radio will identify it and automatically load the correct profile to optimise audio performance.

**PMMN4067**  
**IMPRES WINDPORTING RSM**  
Emergency button, High / Low Volume Toggle.



### ACTIVE NOISE CANCELLING REMOTE SPEAKER MICROPHONE

COMMUNICATE CLEARLY IN HARSH ENVIRONMENTS

Whether you are in a noisy oil refinery or in the midst of fighting a fire, you cannot afford to lose seconds struggling to get your message through. The ANC RSM has been designed to withstand the toughest environments, while providing clear communication.

Exaggerated controls, including large glove friendly front and side Push-To-Talk (PTT) buttons, allow you to transmit with ease even when wearing protective gear that can make reaching for a side PTT challenging.



#### ANC RSM

With two audio jacks, a 3.5mm and a Nexus jack, the ANC RSM is more versatile than ever. The Nexus jack has an open ATEX/IECEx interface, enabling third party headsets with compatible interfaces, such as the Draeger FPS-Com-Plus, to be used safely. Select from a variety of Peltor Headsets that have been certified with the ANC RSM to ensure optimum performance and audio quality. Any ATEX/IECEx certified accessory with a matching set of input parameters published in the certificates can be safely connected.

Further, the ANC RSM has a unique sliding cover that ensures the 3.5mm audio jack is protected when not in use, preventing any debris or liquids from entering the device. It supports a comfortable receive only earpiece.

#### PMMN4093 ANC RSM

IMPRES Audio, Large Front and Side PTTs, Nexus and 3.5mm Audio Jacks, Programmable Button, Emergency Button, High / Low Volume Toggle, ATEX/IECEx IP67.

#### Water and dust protection ratings for the ANC RSM:

IP66 and IP67 per IEC-60529  
IP64 and IP67 per IEC 60079-0:2011 and IEC60079-11:2011

These IP ratings are maintained even with the Nexus jack uncovered or with a Nexus accessory plugged it.



## RSM SECONDARY AUDIO ACCESSORIES AND PTT ADAPTERS



### ANC RSM SECONDARY AUDIO ACCESSORIES

These accessories meet ATEX/IECEX certification and have been tested and certified with the ANC RSM to ensure optimum performance, safety and audio quality.

#### PMLN7188

Earpiece with acoustic tube and 3.5mm jack with locking feature.



#### PMLN6087

Peltor™ high attenuation headset with dynamic noise cancelling boom microphone, headband. Use with PMMN4093 or PMLN6803.



#### PMLN6092

Peltor high attenuation headset with dynamic noise cancelling boom microphone, helmet attachment. Use with PMMN4093 or PMLN6803.



#### PMLN6333

Peltor Twin Cup headset with dynamic noise cancelling boom microphone, helmet attachment. Use with PMMN4093 or PMLN6803.



#### PMLN6090

Peltor Tactical XP headset with dynamic noise cancelling boom microphone, headband. Use with PMMN4093 or PMLN6803.



#### PMLN6089

Peltor Tactical XP headset with dynamic noise cancelling boom microphone, helmet attachment. Use with PMMN4093 or PMLN6803.



#### RMN5123

Savox HC-1 Helmet-Com® with single speaker. Easily mounts into most helmet types providing best in class audio quality and hands-free communication. Use with PMMN4093 or PMLN7257.



#### GMMN4580

Savox HC-2 Helmet-Com® with dual speakers. Easily mounts into most helmet types providing best in class audio quality and hands-free communication. Use with PMMN4093 or PMLN7257.



### PUSH-TO-TALK ADAPTERS

#### PMLN6803

Peltor Small PTT Adapter for use with Peltor Headsets as an alternative to the ANC RSM. Attaches directly to the side connector of the MTP8000Ex series radios. Compatible with Peltor™ Headsets PMLN6087, PMLN6092, PMLN6333, PMLN6090 and PMLN6089.



#### PMLN7257

Savox C-C440 Com-Control® Large PTT for use with Savox Headsets as an alternative to the ANC RSM. Attaches directly to the side connector of the MTP8000Ex series radios. Compatible with Savox Helmet-Com® RMN5123 and GMMN4580.





# CARRY ACCESSORIES

Our carry accessories keep your hands free so you can concentrate on the task ahead. Choose from a range of leather carry cases, straps, shoulder wearing accessories and belt clips, all designed for easy access to your MTP8000Ex Series radio.



## **PMLN6086**

2.5 inch Belt Clip has been built with durable plastic to ensure the radio stays on securely and within easy reach.



## **NTN5243**

This Carry Case Shoulder Strap is compatible with all carry cases with D-rings.



## **MDHLN6602**

Universal Chest Pack to protect the radio includes a radio holder, pen holder and secured pocket for spare batteries, tools, and other communication devices. Can be comfortably worn on the chest, with adjustable straps to fit most body shapes and heights.



## **MDRLN4815**

RadioPak Radio Utility Case worn around the waist and holds the radio right at hand. Includes a separate zippered pouch for other on-the-job necessities.



## **PMLN7195**

Hard Leather Case with 2.5" Belt Loop. Can be used with shoulder strap NTN5243. Radio not included.



## **PMLN7268**

Hard Leather Case with 3" Belt Loop. Can be used with shoulder strap NTN5243. Radio not included.



## CARRY ACCESSORIES

### PETER JONES (ILG) KLICK FAST ACCESSORIES FOR USE WITH SHOULDER WEARING DEVICE PMLN5004

#### **PMLN5004**

Shoulder wearing device compatible with all Peter Jones (ILG) Klick Fast docks and belt loops shown on this page.



#### **GMDN0386**

Peter Jones (ILG) Klick Fast sew-on dock for mounting on uniforms and body armour.



#### **GMDN0445AA**

Peter Jones (ILG) Klick Fast snap-on tag dock.



#### **GMDN0445AC**

Peter Jones (ILG) Klick Fast belt loop with mounting dock low hang (50mm in width).



#### **GMDN0497**

Peter Jones (ILG) Klick Fast 38mm belt dock.



#### **GMDN0547**

Peter Jones (ILG) Klick Fast double-tongue tag dock.



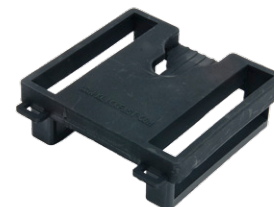
#### **GMDN0566AC**

Peter Jones (ILG) Klick Fast 50mm belt loop.



#### **GMLN4488**

Peter Jones (ILG) Klick Fast 50mm belt dock.



#### **WALN4307**

Peter Jones (ILG) Klick Fast retro fitting garment with easy screw-to-fit dock.







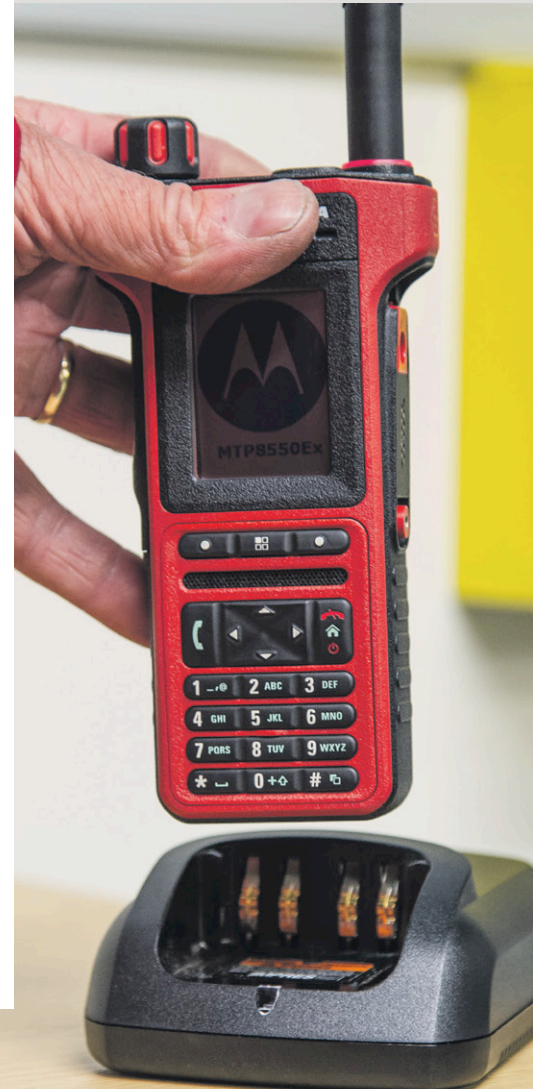
# IMPRES™ BATTERIES, CHARGERS & VEHICULAR ACCESSORIES

## IMPRES SMART ENERGY SYSTEM

Drawing on our exclusive technology to enable communication between your battery and charger, our innovative IMPRES energy system prolongs battery life and automates battery maintenance. The display of multi-unit chargers provides users with critical information about their battery such as state-of-charge, original capacity and current capacity. The IMPRES Battery Management tool also allows automatic data collection and management of large battery fleets.

Only IMPRES batteries can be charged 150 additional times versus a standard battery – a 43% increase in charge cycles. If you charge radios two to three times a week, you'll get more than an extra year out of every battery.

**SAFER, STRONGER,  
POWERED FOR LONGER.**



## BATTERIES, CHARGERS & VEHICULAR ACCESSORIES

### IMPRES BATTERY

IMPRES batteries when used with an IMPRES charger, provide automatic and adaptive charging, end-of-life display and other advanced features.



**NNTN8570**  
IMPRES 1250 mAh typical Li-Ion Battery

### IMPRES SINGLE UNIT CHARGERS

IMPRES Single Unit Chargers are ideal for personal use. Charge your radio or 1 spare battery.



**WPLN4254**  
IMPRES Single Unit Charger –  
UK, 220-240 VAC



**WPLN4255**  
IMPRES Single Unit Charger –  
Euro, 220-240 VAC



**WPLN4253**  
IMPRES Single Unit Charger –  
US, 110 VAC

### IMPRES MULTI-UNIT CHARGERS

Charger Display Modules provide powerful, real time analyzing information for IMPRES batteries, including current charge status, battery mAh, and rated capacity. The readout displays battery kit number, serial number and chemistry and the time remaining to complete the charge for IMPRES batteries. Charge up to 6 radios or spare batteries simultaneously.



**WPLN4221**  
IMPRES Multi-Unit Charger  
with 6 displays and UK plug.  
100-240 VAC



**WPLN4220**  
IMPRES Multi-Unit Charger  
with 6 displays and Euro plug.  
100-240 VAC



**WPLN4219**  
IMPRES Multi-Unit Charger  
with 6 displays and US plug.  
100-240 VAC



**WPLN4214**  
IMPRES Multi-Unit Charger  
with 1 display and UK plug.  
100-240 VAC



**WPLN4213**  
IMPRES Multi-Unit Charger  
with 1 display and Euro plug.  
100-240 VAC



**WPLN4212**  
IMPRES Multi-Unit Charger  
with 1 display and US plug.  
100-240 VAC



## BATTERIES, CHARGERS & VEHICULAR ACCESSORIES

### VEHICULAR CHARGERS

#### NNTN7616

This IMPRES-compatible vehicular charger has full IMPRES charger-to-battery communication capability. Vehicular Charger hard-wired to car battery, 12VDC.



#### NNTN8525

Vehicular Travel Charger uses car power adapter 12-24VDC.



### IMPRES BATTERY MANAGEMENT

With the unique IMPRES Battery Data Reader or IMPRES Battery Management systems, you can efficiently manage batteries with real-time data.

These easy-to-use software applications show you if there is enough capacity for a full shift, alert you to low capacity batteries, prevent downtime and eliminate throwing batteries out prematurely.

#### NNTN7677

IMPRES Fleet Management Charger Interface Unit for Multi-Unit Chargers.



#### NNTN8045

IMPRES Battery Management Charger Interface Unit for Single Unit Chargers.



#### HKVN4037

IMPRES Battery Management License Key.

### IMPRES BATTERY MANAGEMENT COMMUNICATE CONTINUOUSLY, WORK EFFICIENTLY

IMPRES Battery Management delivers battery-critical information to enhance the performance and safety of your organization by providing the following benefits:

- Alerts you when batteries are below your specified minimum capacity
- Ensures there is enough capacity for an entire shift
- Eliminates unplanned downtime and work interruptions
- Avoids the expense of throwing batteries away prematurely
- Decreases the need for excess battery inventory

### TO DEPLOY IMPRES BATTERY MANAGEMENT:

1. Download IMPRES Battery Management Software from [Motorola Online](#).
2. Purchase HKVN4037 Entitlement ID(s) for up to 20 PCs.
3. Purchase NNTN7677 Charger Interface Unit for each Multi-Unit Charger and/or NNTN8045 Charger Interface Unit for each Single-Unit Charger.



#### NNTN7392

IMPRES Battery Data Reader enables easy and instantaneous read-out of information that is stored in the battery to facilitate battery management. The Battery Reader is a stand alone tool that is ideal for a technician's workbench to enable quick, individual battery analysis, while IMPRES Battery Management allows simultaneous analysis of an entire fleet of batteries. Laptop not included.

## ANTENNAS AND MISCELLANEOUS ACCESSORIES

### ANTENNAS



**PMAE4097**

Antenna, Whip 120mm  
(350-470MHZ)



**PMAE4096**

Antenna, Stubby 80mm  
(380-430MHZ)



**PMAF4019**

Antenna, Whip 80mm  
(806-870MHZ)

---

### RADIO PROGRAMMING CABLES



**PMKN4159**

Serial Data Cable



**PMKN4160**

USB Data Cable

---

### MISCELLANEOUS ACCESSORIES

**PMKN4161**

E2EE KVL Cable

**0104063J98**

Radio Side Connector Dust Cover

For more information on the MTP8000Ex Series Accessories,  
please visit [www.motorolasolutions.com/MTP8000Ex](http://www.motorolasolutions.com/MTP8000Ex)